



Eval Kit Quick Start Guide

ENS210 Standard Board

ENS210-QF_EK_ST

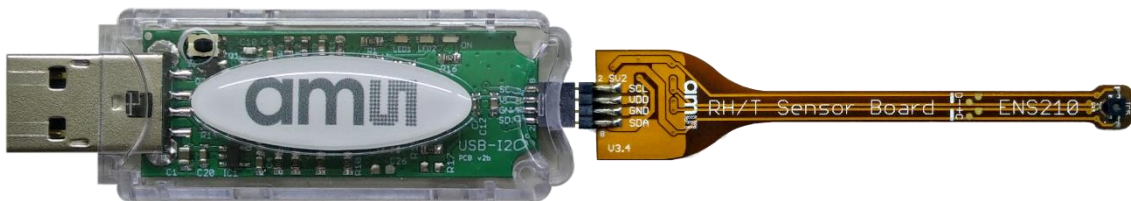
Note: For a detailed description of the ENS210 Standard Board please refer to the Eval Kit Manual!

1 Out of the Box

Each ENS210 evaluation kit comes with the following components:

- ENS210 sensor shield
- USB-I2C Dongle
- Card with URL to download application software and documents

Figure 1: ENS210 Evaluation Kit



2 Software Installation

Quick steps:

- Connect ENS210 mounted shield and USB-I2C dongle.
- Connect USB dongle to Windows PC
- Install driver for the USB-I2C dongle
- Install Windows PC ENS dashboard application

Driver for USB-I2C dongle can be downloaded from <https://download.ams.com/ENVIRONMENTAL-SENSORS/USB-I2C-DONGLE>.

Install the driver for USB-I2C dongle from its installer (ams_usbi2cdongledriver_setup.exe). Refer to Figure 2 to Figure 5

Figure 2: Setup - USB-I2C Dongle Driver

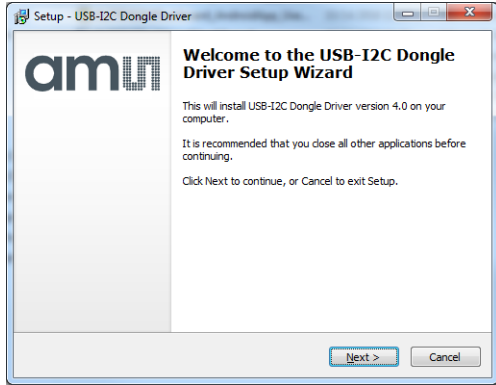


Figure 4: Windows Security

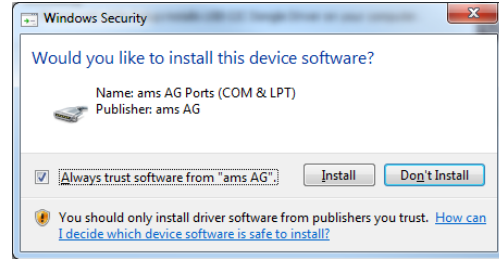


Figure 3: Ready to Install

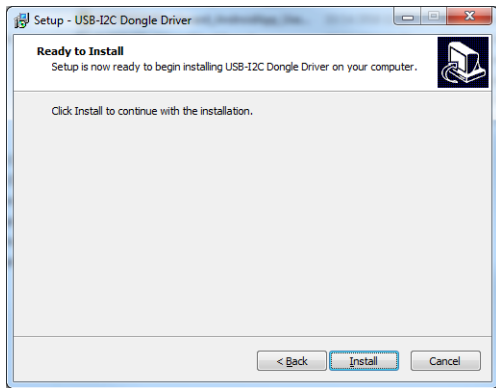


Figure 5: Installation Complete



ENS Dashboard Windows installer program can be downloaded from <https://download.ams.com/ENVIRONMENTAL-SENSORS/WINDASHBOARD>.

Refer to Figure 6 to Figure 7 for installation

Figure 6: ENS Dashboard Installer

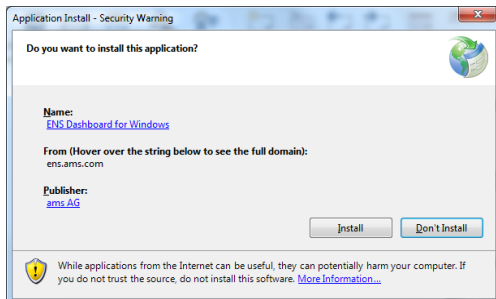
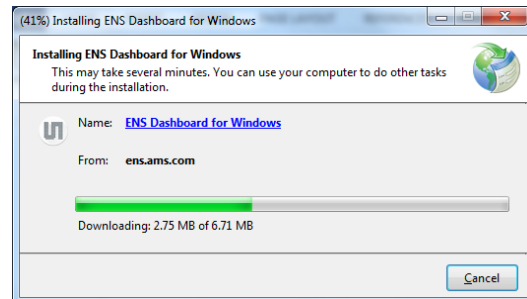


Figure 7: Installing ENS Dashboard



3 Connect Hardware

Plug the ENS210 sensor shield into the USB-I2C dongle. The shield can be plugged to the dongle in a reversible manner, which means that shield can be plugged in top up or bottom up. Refer to Figure 8 and Figure 9. Connect the dongle to the USB port of a Windows PC. The dongle should be detected as “USB-I2C Dongle (COMxx)” under “Ports (COM & LPT)”. This can be checked in Device Manager.

Figure 8: Sensor IC facing upwards



Figure 9: Sensor IC facing downwards



4 Start the Application

The ENS Dashboard application is a Windows PC application which demonstrates the features of ENS210 (Relative Humidity and Temperature Sensor).

Note that this application requires Microsoft .NET framework. It may be required to be installed additionally.

To start the application and read data

Start the application from Start->All Programs->ams AG ->ENS Dashboard ->ENS Dashboard for Windows.

Figure 10: ENS Dashboard Launcher

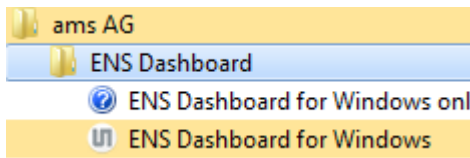
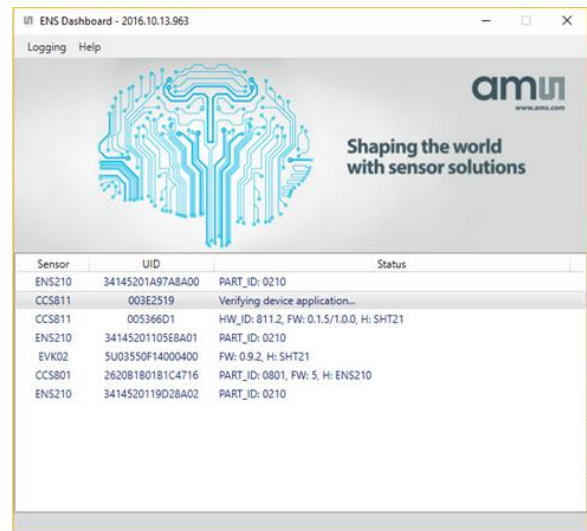


Figure 11: ENS Dashboard Launch Window



Select the device from the list and double click on it to launch the dashboard.